



Perimeter Detection Systems

MAXIRIS 3100

High Performance Infrared Barriers



ZONING & IP

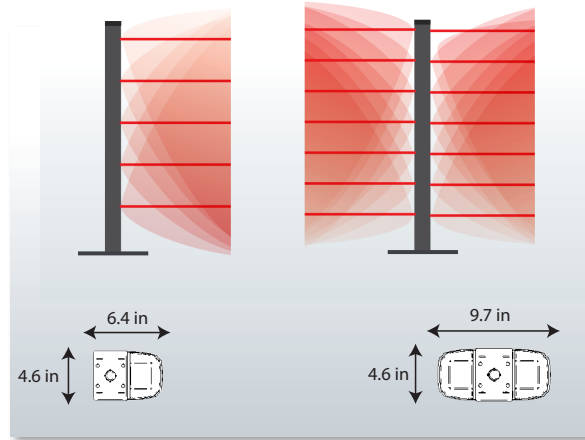
- Innovative **Zoning** Function
- **IP** Technology for remote Maintenance and Set up
- High detection performance



Adaptability

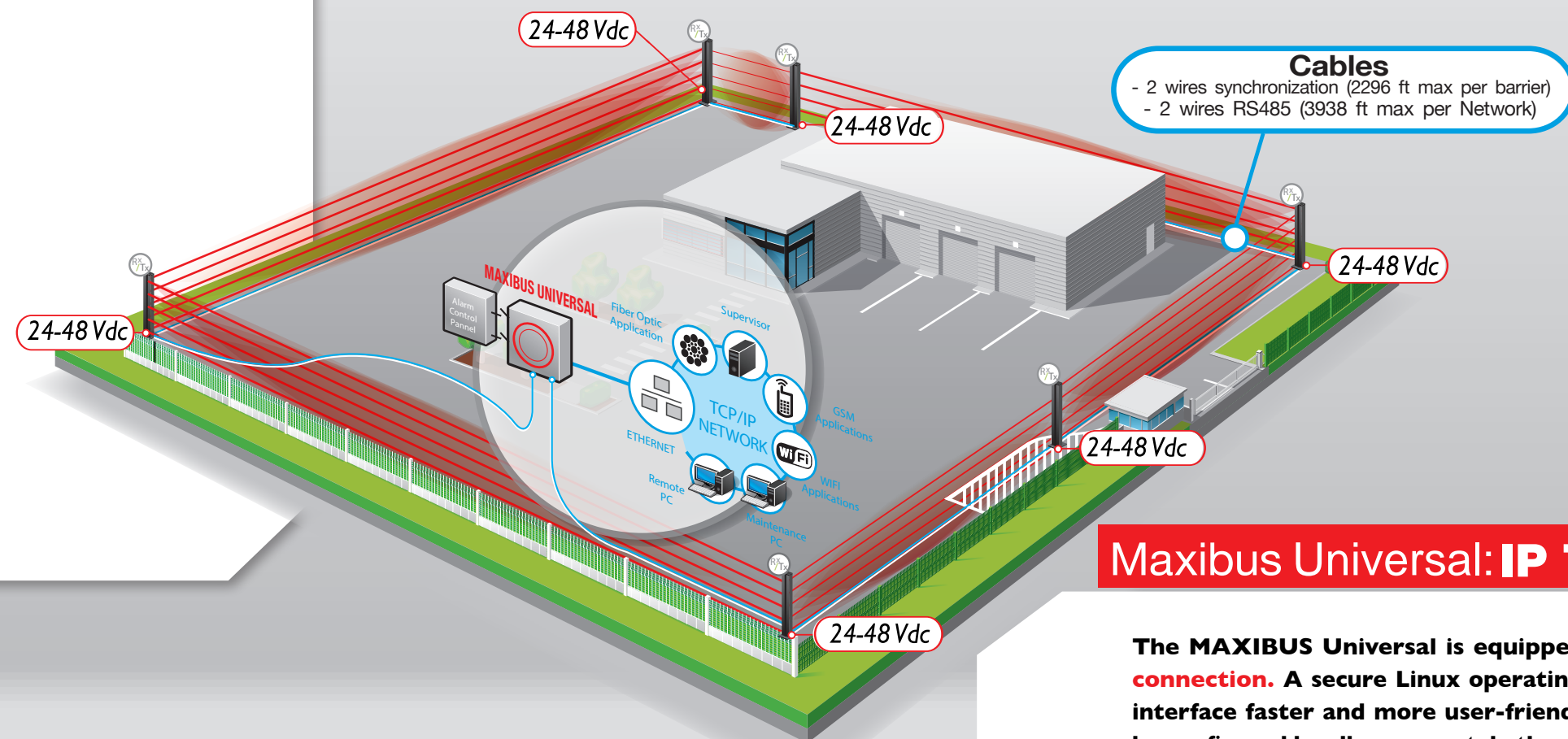
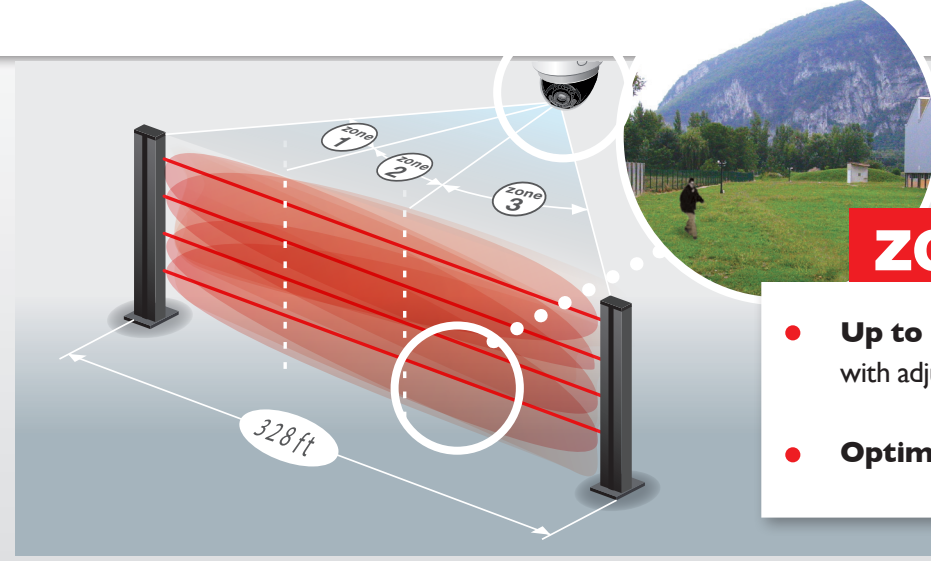
MAXIRIS 3100

- Single and Double Face tower
- High density of beams : max 14 beams per 10 ft tower in single direction
- Zoning: from 6 to 10 cells per tower (top beam left uncut)
- Integrated lightning surge protection: easily replaceable



ZONING Function

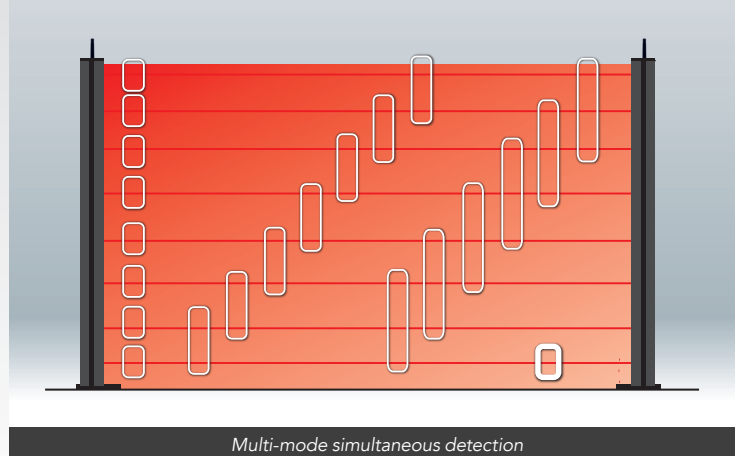
- Up to 3 detection zones with adjustable length
- Optimized control of cameras



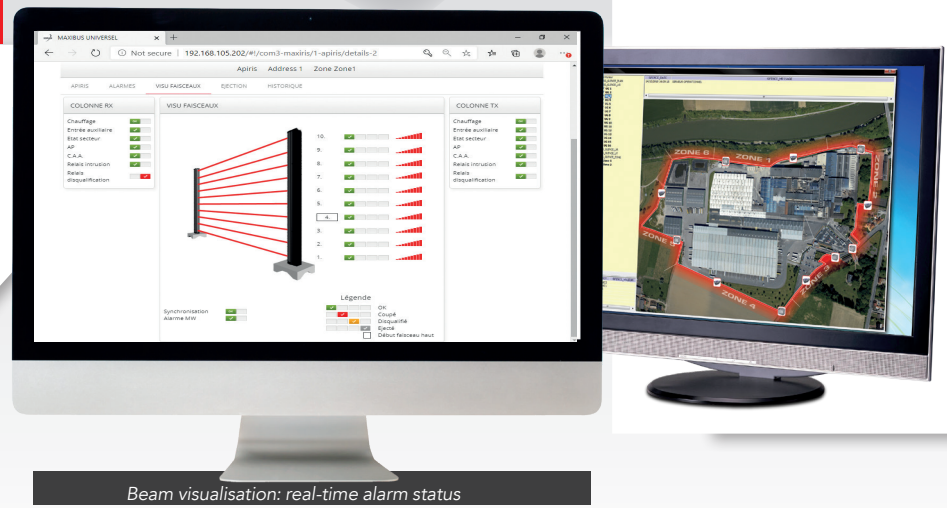
Maxibus Universal: IP Technology

The MAXIBUS Universal is equipped with an **Ethernet connection**. A secure Linux operating system makes the interface faster and more user-friendly. Each system can be configured locally or remotely through the web server.

High Performance Infrared



- Mixed cells Transmitter/Receiver
- Single / Dual / Triple Cell Detection
- Bottom beam management: detect crawling
- Detection transferred to next beam in the event of an ejected zone



- 4 communication ports : can handle up to 128 MAXIRIS towers (4 x 32 towers)
- Compatible with many VMS through our SmartBridge Plugin
- Remote set-up & maintenance and alarm log history
- Graphical view of the towers on site

Multi-mode simultaneous detection

Beam visualisation: real-time alarm status

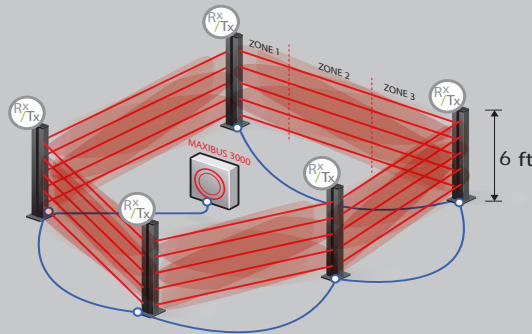


MAXIRIS 3100

Inside maximum range	1640 ft				
Outside maximum range no matter what the weather conditions	328 ft				
Height of the towers (approximate)	1 m	1.5 m	2 m	2,5 m	3 m
	3 ft	5 ft	6 ft	8 ft	10 ft
Intrusion alarm information	Up to 3 intrusion zones (distance can be configured)				
Alarm outputs	RS 485 on each tower, compatible with MAXIBUS hub Ethernet (RJ45 in each tower) compatible ModBus TCP/IP server/client Dry contacts output: from 8 up to 136 relays maximum per hub -> 2 dry contacts available per tower				
Power supply	24Vdc/48Vdc optional: 110Vac, 60Hz				
Alignment tools	Audio and Visual signals inside each tower				
Operating temperatures	From -40°F to 158°F Thermostatic heater in each tower				
Electro magnetic compatibility	In compliance with European standards (CE approval)				
Configuration tools	<ul style="list-style-type: none"> • Integrated web server inside each tower • Integrated web server inside the MAXIBUS hub: access at a distance via internet connection 				
HTML server functions	<ul style="list-style-type: none"> • Password protection • Reading/Entry of the parameters • Visualization of the log history and the state of the barrier 				

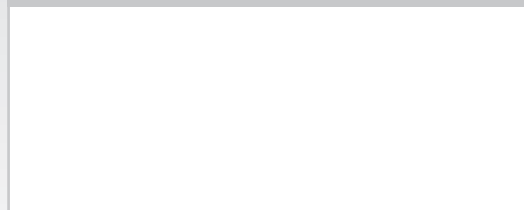
Configuration Example

Example with 5 towers, 6 ft, 5 cells, Network, closed loop, 3 detection zones per barrier



Required parts	MAXIRIS 3100
Towers	5 x towers 6 ft DFISD 5Rx/5 Tx - Ref: 30704206
Brackets	5 x Floor sockets - Ref: 30580001
Hub	1 x MAXIBUS Universal hub 4 port - Ref: 30792002
Extension cards	3 x Extension cards - Ref: 35588419-P
Options	
Surge protector spare part	Ref: 80901609
Wall fixing SF	Ref: 30580002
Wall fixing DF	Ref: 30580021

Seal of the retailer



In order to continuously ensure the high standard of quality and performance of our products, we reserve the right to modify the present technical data without notification.



Protection Technologies, Inc. - 529 Vista Blvd
Sparks, NV 89434 - USA - Toll Free: 1-800-428-9662

Phone: (775) 856-7333 - Fax: (775) 856-7658 - E-mail: sales@protechusa.com

www.protechusa.com