

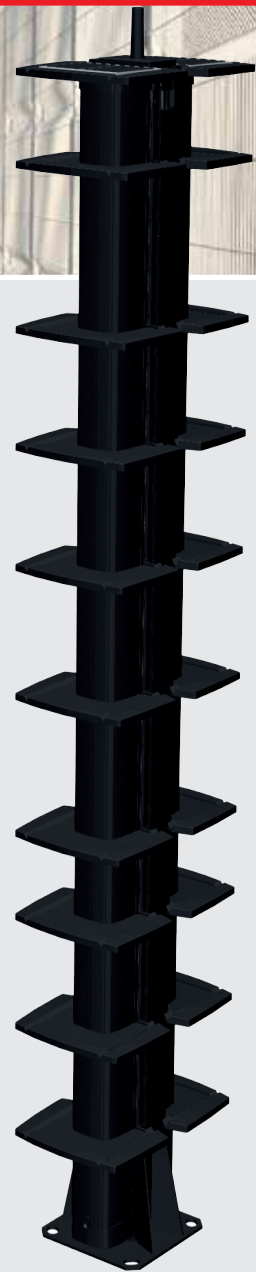


328 ft.  
100m  
outdoor  
range

Perimeter Intrusion Detection Systems

# SOLARIS

Long Range Wireless Active Infrared Barrier



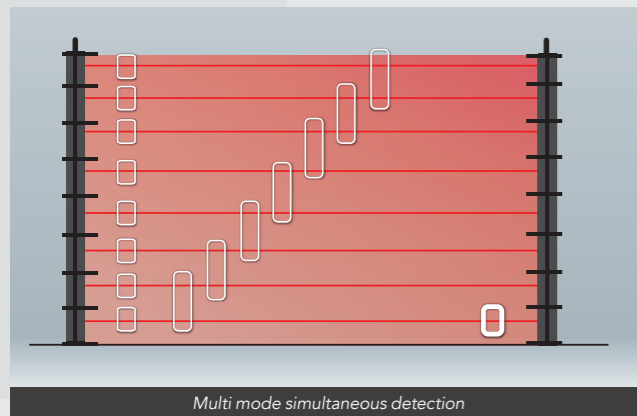
## PERFORMANCE FEATURES

- **High reliability** of infrared
- **100% Stand-alone barrier:** easy to install
- **Solar Energy and battery:** no civil engineering
- **Secured and integrated radio communication**
- **MAXIBUS Universal compatible:** integration with VMS
- **New: Train filtering functionality, polyacetal housing option and configuration software**



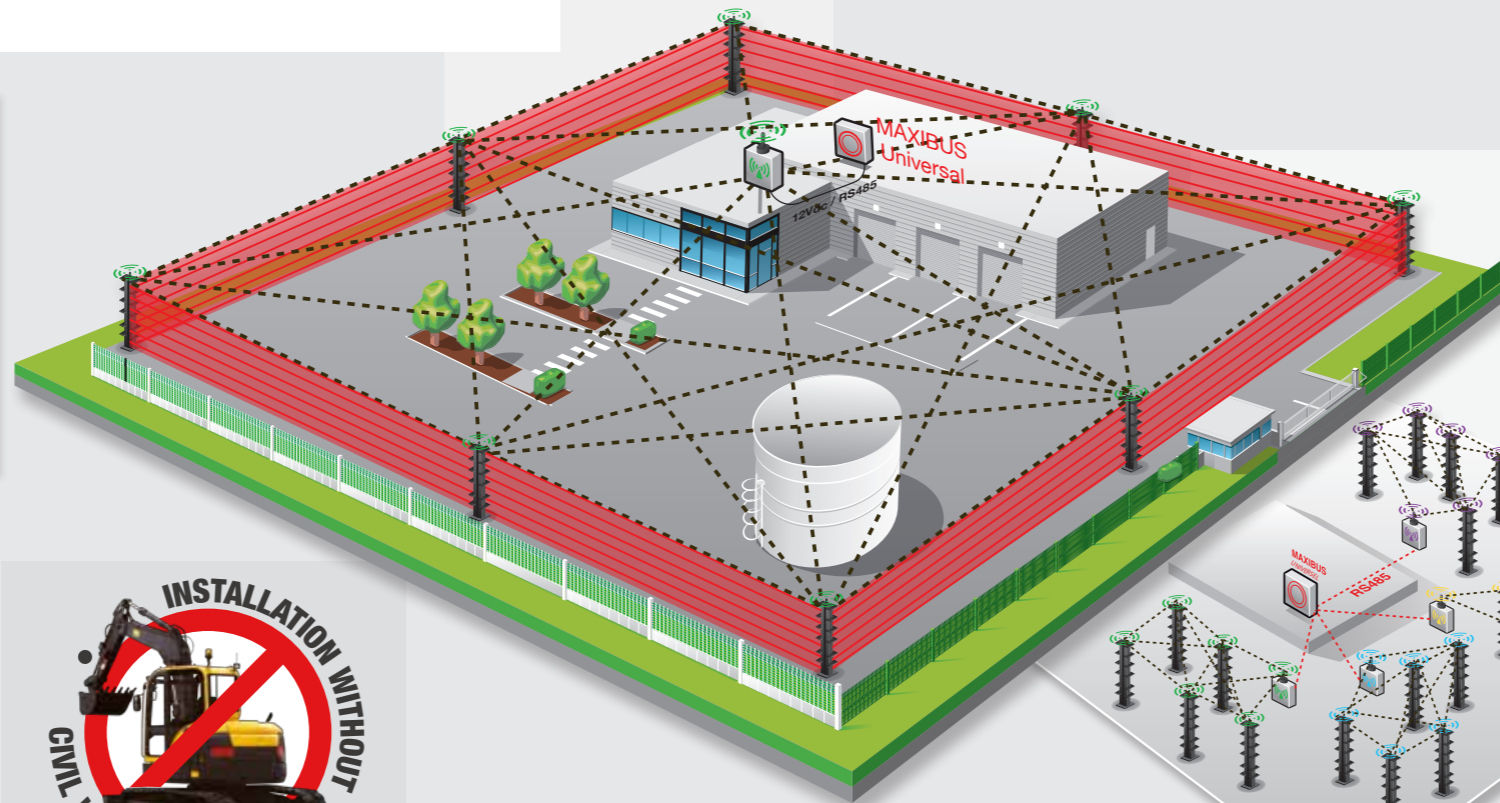
## HIGHLY RELIABLE INFRARED

- **35 years' experience** in infrared technology
- **Intruder size filtering using several simultaneous detection modes:** Standard modes, single detection, bottom beam mono-detection and dual-detection
- **Intruder speed filtering: alarm timing**
- Combination of the two filters: **reduction in number of unwanted alarms**
- **Autonomous barrier with a 328 ft. (100 m) infrared range:** all-weather operation ensured by **anti-condensation and anti-frost caps** that (mechanically) prevent condensation and frost from building up on the column housing



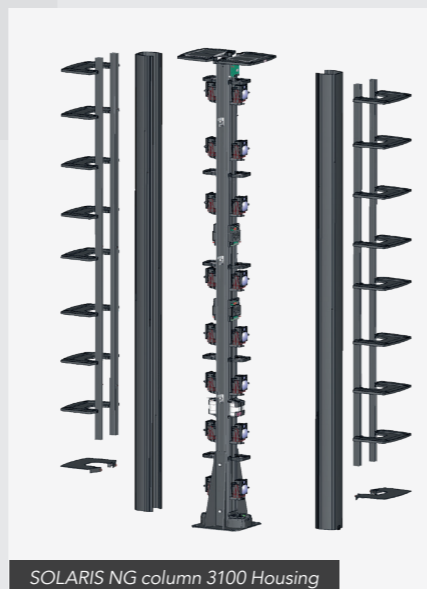
## 100% AUTONOMOUS

- **No civil engineering:** no cables
- Powered by **solar energy and battery**
- **Secured radio communication**



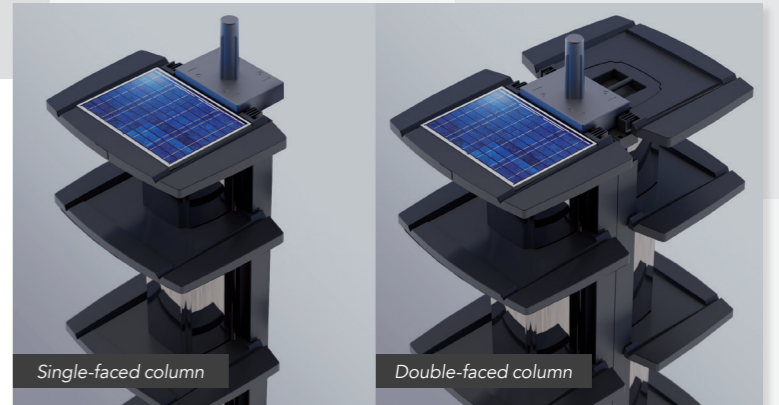
## SECURED RADIO COMMUNICATION

- **Native radio**
- **Private LoRa®** radio communication using bandwidth 915MHz
- **Encrypted radio network:** AES 128 encryption securing data
- **Meshed radio network** that guarantees a robust installation
- **Integrity and security of the site:** permanent control of the presence of each column in the network (watchdog function)
- **Radio range:** 300 m direct line of sight range



## SOLAR ENERGY

- **Solar panel** with no specific orientation required
- **2 months** of battery **autonomy** in complete darkness before the low-battery alarm is triggered
- **Tampered** solar panels and integrated anti-support cap



## NEW FEATURES

- **Polyacetal housing option** for a 100% plastic column to secure specific sites such as airports and electricity transformer stations
- **Simplified configuration and maintenance** with the configuration software
- **Train filtering functionality:** the algorithm can differentiate between a vehicle (train or metro) and an individual passing between two infrared columns



## MAXIBUS UNIVERSAL COMPATIBLE




### OPTIMIZED ALARM MANAGEMENT...



- **Centralization of all system alarms** to a single point
- **Remote access to products:** configuration and maintenance
- **Embedded** web server
- **Time and date stamped history** of alarm events

### ...DESIGNED FOR SIMPLIFIED INTEGRATION ON ALL YOUR SITES

- **Integration with VMS**
- **Easy integration:** API available
- **Secure** data transmission: **802.1X**, TLS...
- **Various** alarm transmission **protocols:** ModBus, API
- **Dry contact** outputs: up to 136 relays

## TECHNICAL CHARACTERISTICS

	SOLARIS COLUMNS		
Housing	3100		
Column heights	2 m	2.5 m	3 m
Plastic column optional	Polyacetal housing available: frangible column, 100% plastic 		
Maximum outdoor IR range in all weather conditions	328 ft. (100 m)		
Maximum number of cells per direction	Up to 10 cells		
Detection mode	Multiplexing with optical synchronization: Mono-detection / Bottom beam mono-detection / Dual-detection		
Power supply	Solar panel and integrated battery in each column		
Alarm information	Intrusion / Disqualification / Tamper / Anti-climbing cap / Low default battery / Radio loss		
Alarm transmission	Dynamic radio mesh network to radio coordinator		
Advanced feature	Train filtering functionality available 		
Alignment assistance tools	Audio and visual signals on all columns		
Operating temperature	From -40°F (-40°C) to +158°F (+70°C)		
Electromagnetic compatibility	Compliant with European standards (CE label) and to the highest international standards 		

	RADIO COORDINATOR
Radio range	300 m
Alarm transmission	RS485 compatible with MAXIBUS Universal
Radio frequency	Bandwidth 915MHz,  modulation, 19 selectable channels
Power supply	12 Vdc
Operating temperature	From -40°F (-40°C) to +158°F (+70°C)
Compatibility	Radio network compatible with PIRAMID detectors and the 8 input module M18 

	MAXIBUS UNIVERSAL HUB
Configuration tools	Embedded web server
Alarm outlets	From 8 to 136 dry contacts / Modbus / PLC outputs
4 communication ports	Can handle 4 radio networks simultaneously (4 radio coordinators), i.e. 96 SOLARIS columns (4 x 24 columns)
Power supply	12 Vdc
Operating temperature	From +32°F (0°C) to +131°F (+55°C)
Security	Compatible networks 802.1X and TLS